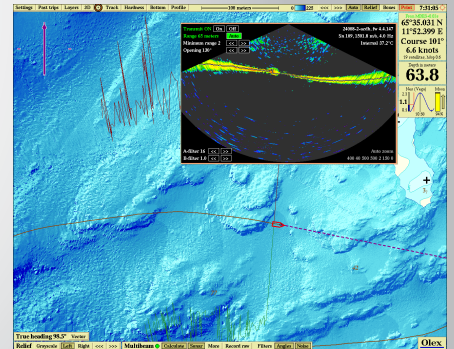
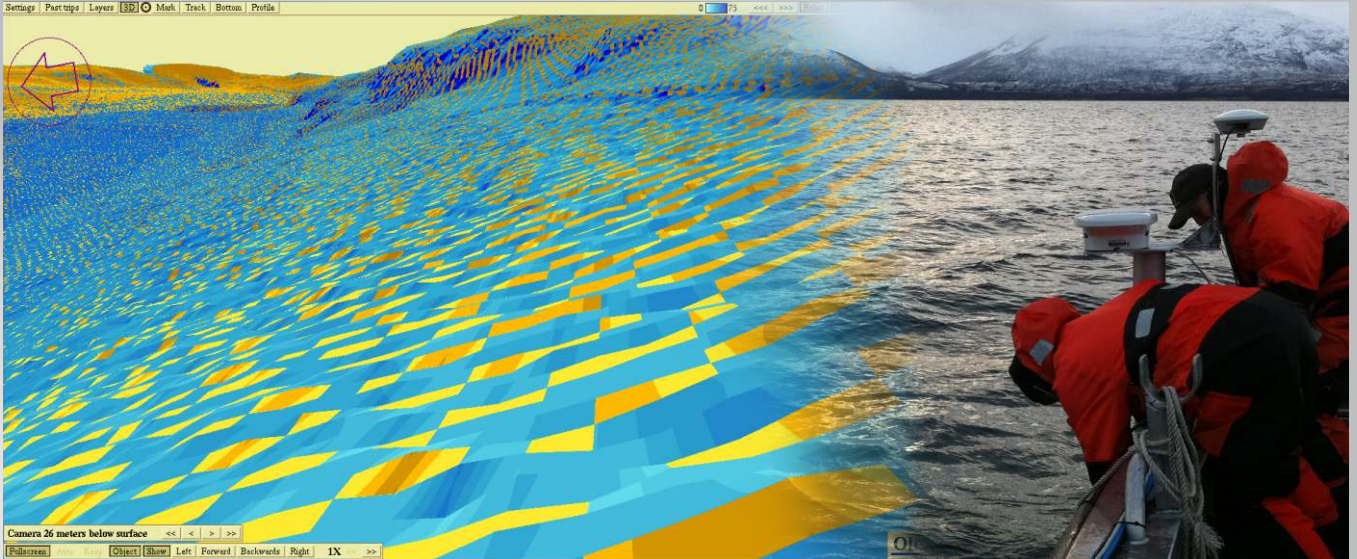


Atec multibeam sonar

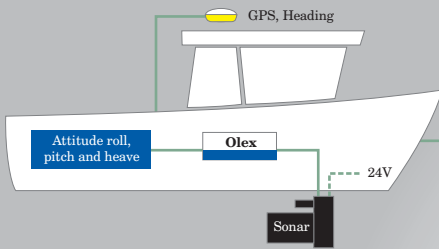


Atec multibeam sonar is designed for high resolution seabed survey. The compact sonar with integrated transceiver and sound velocity sensor connects directly to Olex via Ethernet, and is automatically controlled without any need for manual operation.

Olex

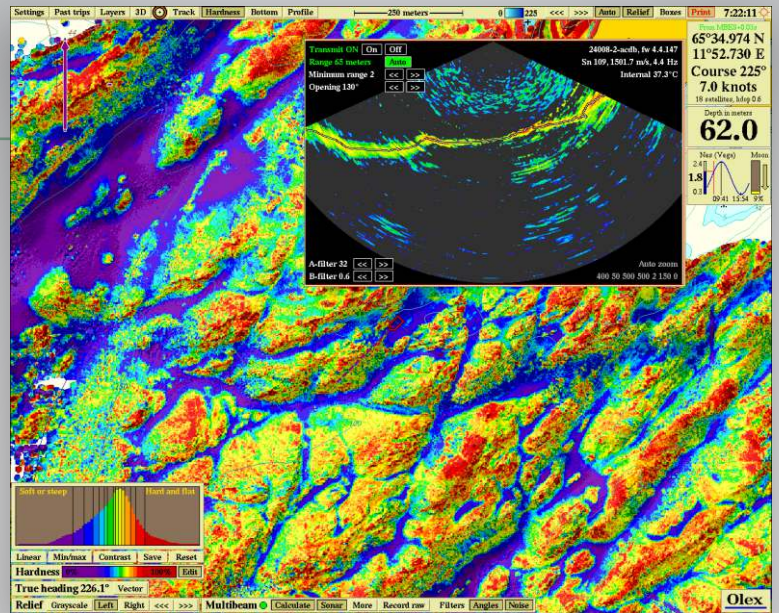
www.olex.no

Complete survey package



A complete setup of Atec with accompanying sensors and software, will typically consist of the following:

- Olex full version
- HT+Atec software modules for Olex
- Atec multibeam sonar
- Trimble RKT-GPS
- Spatial all-in-one sensor
- Sound velocity sensor



Technical specifications

	Atec 200	Atec 400
Swath coverage	Up to 180° - typically 130°	Up to 180° - typically 130°
Number of beams	256	256
Operating frequency	100-800 kHz - nominally 200 kHz	320-480 kHz
Bandwith	0-40 kHz	80 kHz
Ping rate	Up to 50 Hz	Up to 50 Hz
Range	0,5-500+ m	0,2-200+ m
Range resolution	<10 mm	<10 mm
Resolution	2,0° across and along track	0,9° across and 1,9° along track
Sonar power consumption	50-70W	30-40W (peak <120W)
Voltage	20-28V DC	20-28V DC
Standard cable length	8 m	8 m
Storage temperature	-20°C til +60°C	-20°C til +60°C
Operating temperature	-4°C til +40°C	-4°C til +40°C
Weight	6,0 kg	4,3 kg
Dimensions	L 293 mm, W 245 mm, H 163 mm	L 200 mm, W 236 mm, H 154 mm
Center distance mounting bolts	160 mm	160 mm

Exceeds IHO Special Order

